

POMPE A MEMBRANA DIAPHRAGM PUMPS

MCB - BX05



PP

DATI TECNICI TECHNICAL DATA

Attacchi entrata uscita * Inlet outlet*	1 / 2" F GAS	1 / 2" F GAS
Attacco aria Air connection	1 / 4" F GAS	3 / 8" F GAS
Capacità autoadescamento** Max. self-priming capacity**	6 m	5 m
Portata Max. ** Max. flow rate**	30 l/min	50 l/min
Prevalenza Max. ** Total head**	70 m	70 m
Pressione Max. alimentazione aria Max. air supply pressure	7 bar	7 bar
Massimo diametro passaggio ammissibile solidi Max. diameter of passing solids (spherical particles)	2 mm	4 mm
Mod. Materiali di costruzione Mod. Construction materials	Peso Weight	Max. operating temp. Max. operating temp.

MCB	PP	1,6 Kg	60°C
	PVDF	1,9 Kg	95°C
	Alu	2 Kg	95°C
BX05	AISI 316	3,8 Kg	95°C
	PP	3,6 Kg	60°C
	PVDF	4,2 Kg	95°C
	Alu	4 Kg	95°C
	AISI 316	6,5 Kg	95°C

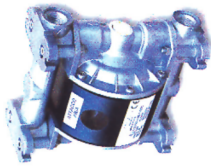
* Attacchi flange a richiesta
Flanged attacks on request
** Dipende dai materiali costruttivi
Depends on used material



PVDF



ALU



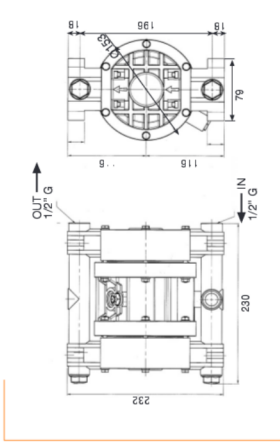
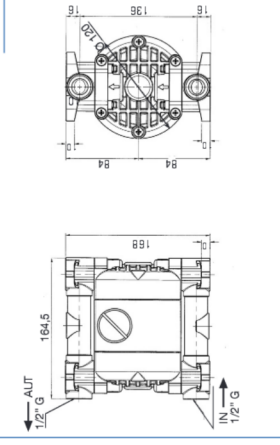
AISI 316

POMPE A MEMBRANA DIAPHRAGM PUMPS

MCB

BX05

DIMENSIONI DIMENSIONS



CURVE PERFORMANCE

MCB

BX05

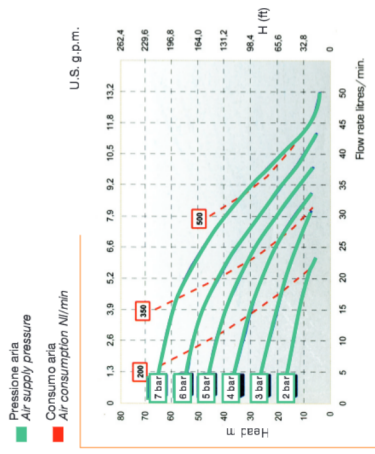
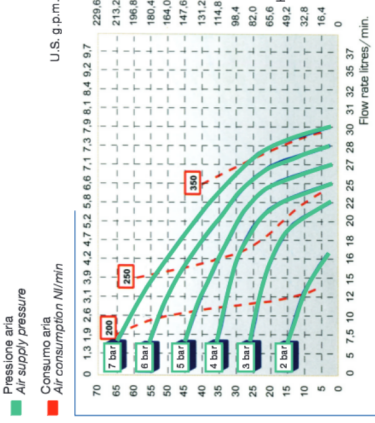


TABELLA MATERIALI PUMP MATERIALS

Modello	Corpo pompa	membrana lato aria	Sfere	Sedi sfere	O-ring	Collettore sdoppiato
Model	Pump body	Membrane air side	Balls	Balls housing	O-ring	Twin manifold
MCB BX05	P = PP F = PVDF AL = Alluminio A = AISI 316	N = NBR D = EPDM H = Hytrel M = Santoprene	T = PTFE A = AISI 316 C = Ceramica G = Vetro N = NBR D = EPDM	P = PP F = PVDF A = AISI 316 SS 316 I = HMW R = PPS-V	D = EPDM V = Viton S = Silicone N = NBR T = PTFE	X = Quando richiesto X = When required