



**ADVANTAGES**

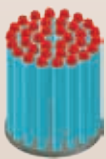
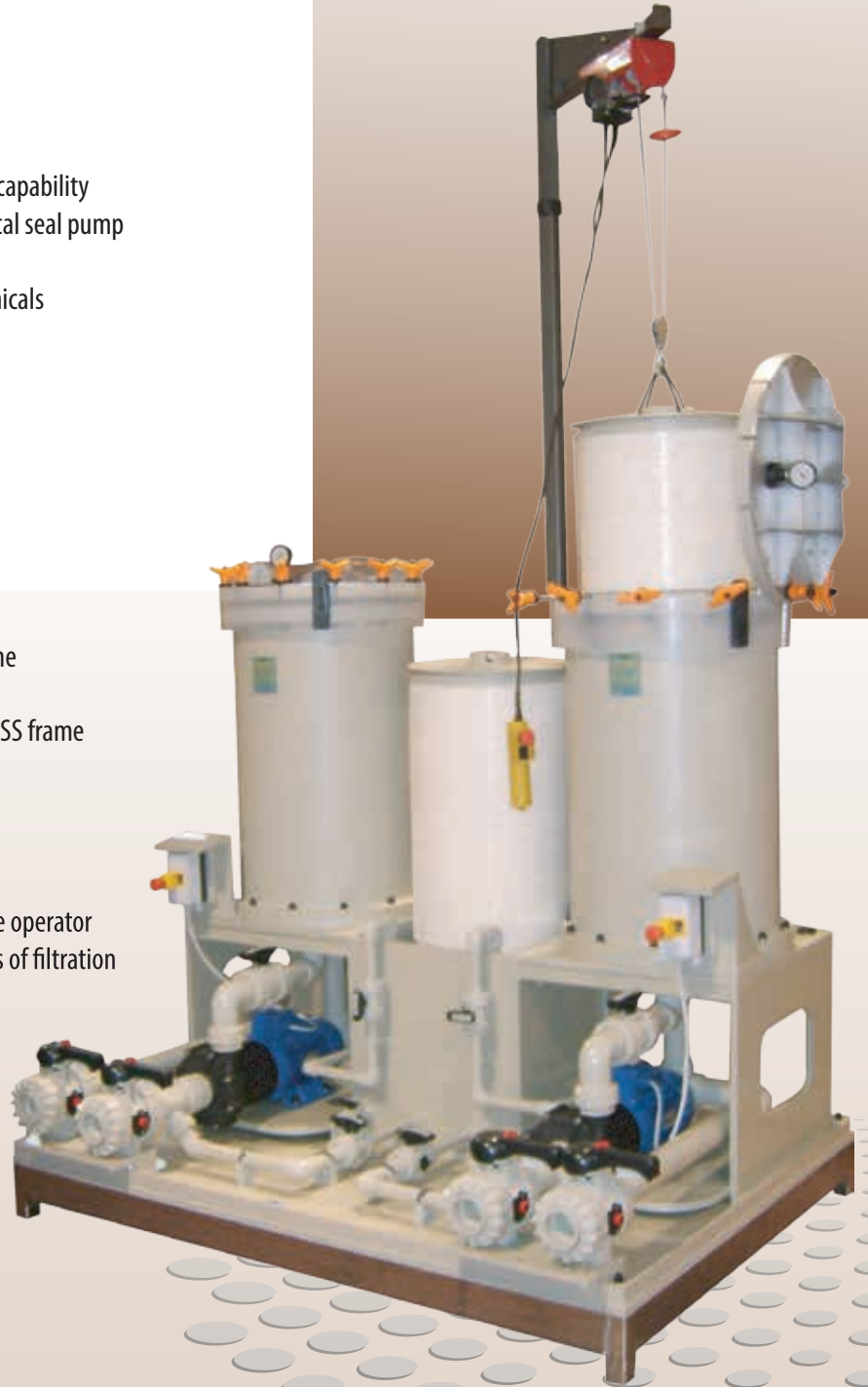
- More robust solid monobloc filter chamber
- Assisted lid opening/closure system
- Improved distribution flow
- Four 90° lid opening positions
- Choice of 9 interchangeable filter inserts
- Large surface area and volume of sediment capability
- Interchangeability magnetic pump/mechanical seal pump (EVOLUTE series)
- Excellent resistance at alkaline and acid chemicals
- Filter housing 3 year warranty

**FEAURES**

- Filter flow rate 30 - 100 m3/h
- Pmax exercise 3 Bar at 70°C
- PP solid monobloc filter housing
- Large choice of filtration systems:
- Versions:
  - TX= Precoat tan, PP valves group and SS frame with PP dropping tank
  - CX= Round precoat tan, PP valves group and SS frame with PP dropping tank
- Filter papers Ø 460/100 mm

**FILTER ELEMENTS**

The great versatility of the filter unit offers to the operator the possibility to choose between different kinds of filtration or purification with the same unit.



Cartridges: PP cap cartridges clamping system Filter insert



Cartridges: PP pressing ring clamping system Filter insert



Hi Flow filter inserts with washable JUMBO and CH high efficiency cartridges



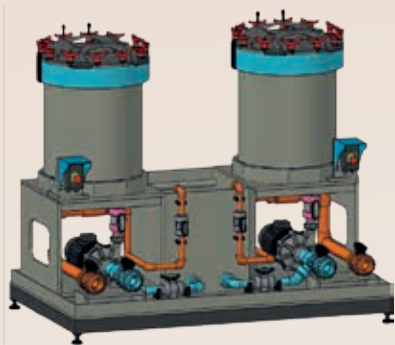
Carbon canister filter insert



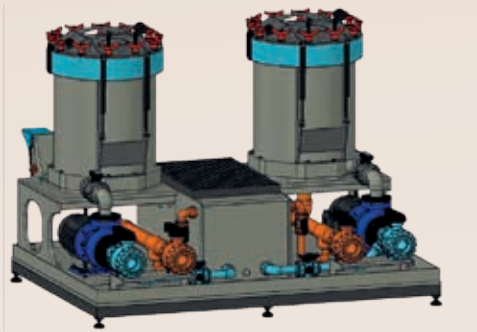
Hi and Low profile discs filter insert with double discs closure system



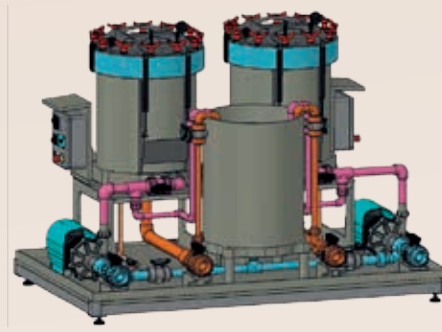
Hi and Low profile discs filter insert



VERSION BIG-D TX



VERSION BIG-DS TX

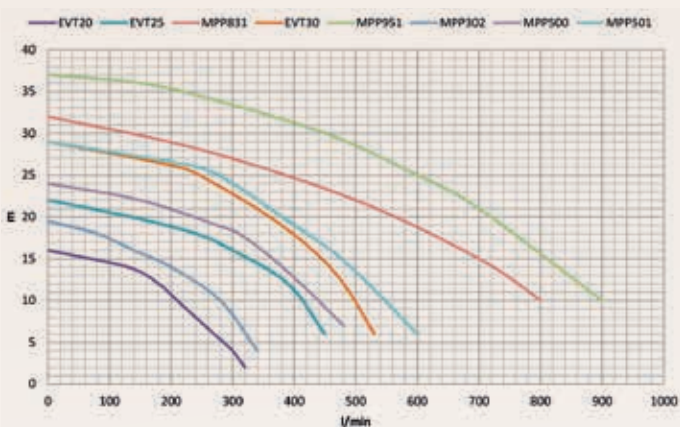


VERSION BIG-DS CX

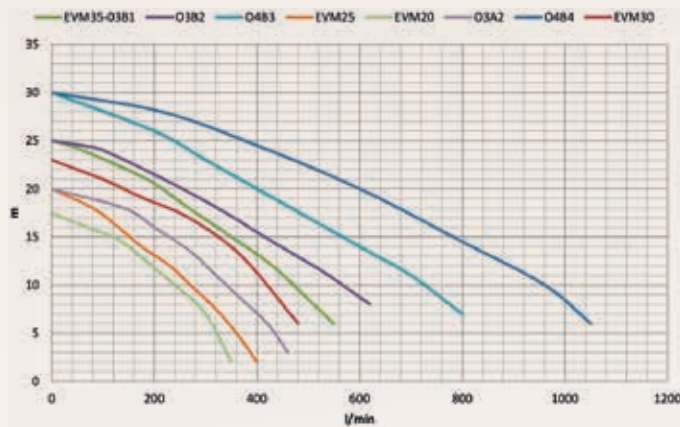
| Mod.            | FILTER HOUSING (n°2)           |                 |              |               |                                     |   |   | PUMPS(n°2)   |   |                   | VERSION   | OPTIONALS  |
|-----------------|--------------------------------|-----------------|--------------|---------------|-------------------------------------|---|---|--|---|-------------------|---|--|
|                 | FILTER INSERT                  |                 |              |               | FILTER ELEMENT                      |   |   | Magnetic drive   | Mechanical seal                               | Materia           | Type  | Type   |
|                 | Discs Dxn°                     | Cartridges      | High Flow    | Carbon        | Discs                               | Cartridges  | High Flow   |  |   |                   |   |  |
| BIG-D<br>BIG-DS | 36D2<br>36D2T**<br>(12/80)     | 36C2<br>(62x20) | 36J2<br>(42) | 36A2<br>(120) | _ = paper<br>P= Meraklon<br>T= PTFE | _ = DOE D63<br>P=DOE D 70<br>A=SOE 222<br>B=SOE 226 | n°14 cartridges<br>WASHABLE<br>JUMBO JBP2A<br>D150 mm | MPP302<br>MPP500<br>MPP501<br>EVT20<br>EVT25<br>EVT 30 | EVM20<br>03A2<br>03B1<br>03B2                 | _ = PP<br>F= PVDF | TX=Precoat<br>tan, PP valves<br>group and SS<br>frame with<br>PP dropping<br>tank | B=By pass pump<br>filter<br><br>R=splashproof<br>lid ring<br><br>I=interlock lis sensor<br><br>P= filter pack<br>replacement system<br>with electric hoist |
|                 | 36D2H*<br>36D2HT**<br>(12x90)  |                 | 36W2<br>(36) |               |                                     |   | n°14 cartridges<br>CH x 20"<br>Absolute Rate          |  |   |                   |   |  |
|                 | 36D3<br>36D3T**<br>(18/120)    | 36C3<br>(62x30) | 36J3<br>(63) | 36A3<br>(180) |                                     |   | n°14 cartridges<br>WASHABLE<br>JUMBO JBP3A<br>D150 mm | MPP302<br>MPP500<br>MPP501<br>MPP831<br>MPP951         | EVM20<br>03A2<br>03B1<br>03B2<br>04B3<br>04B4 |                   |   |  |
|                 | 36D3H*<br>36D3HT**<br>(18x130) |                 | 36W3<br>(54) |               |                                     |   | n°14 cartridges<br>CH x 30"<br>Absolute Rate          |  |   |                   |   |  |
|                 | BIG-D                          | 36D2H           |              |               |                                     |   | P   |  |   | EVT25             |   |  |

\*H - High profile disc for Zinc processes - \*\* Filter insert with titanium double closure system - \*\*\* always combined at SS frame with dropping tank (Option X)

MAGNETIC DRIVE



MECHANICAL SEAL



| 50 HZ          | EVT20   | EVT25   | EVT30   | MPP302  | MPP500  | MPP501  | MPP831   | MPP951  |          |
|----------------|---------|---------|---------|---------|---------|---------|----------|---------|----------|
| KW             | 1,1     | 1,5     | 2,2     | 1,5     | 2,2     | 3       | 4        | 5,5     |          |
| A*<br>230/400V | 4,9/2,5 | 6,5/3,8 | 8,7/5,0 | 6,5/3,8 | 8,7/5,0 | 7,2/5,9 | 13,2/7,6 | 20/11,5 |          |
| A*<br>400/690V |         |         |         |         |         |         |          | 11/6,90 | 14,1/8,1 |
| KW             | 1,1     | 1,5     | 2,2     | 1,5     | 2,2     | 3       | 4        | 5,5     |          |
| 50 HZ          | EVM20   | EVM25   | EVM30   | EVM35   | O3A2    | O3B1    | O3B2     | O4B3    | O4B4     |

\* data can change accordind with motor type